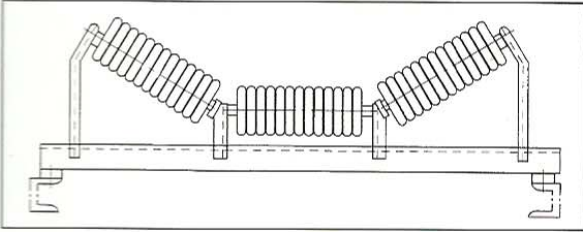


## CARRYING IDLER

For transporting bulk material with the trough angle form 20° through 45° in general.

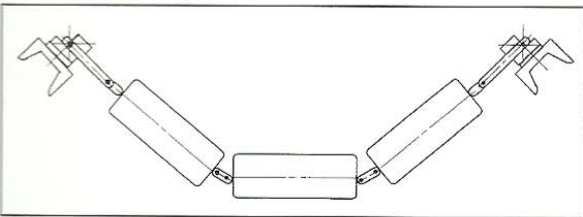
일반적으로 20°~45°까지의 홈각으로 적하물의 운송에 이용.



## IMPACT IDLER

For the loading part to conveyor al lump material.

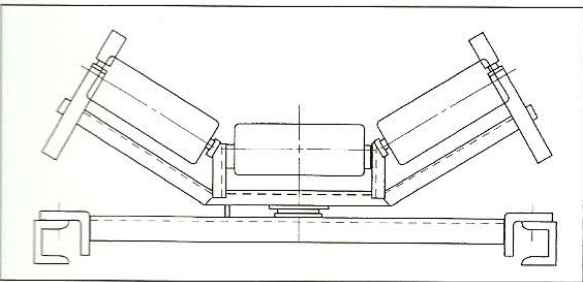
덩어리 재질의 적하부에 사용.



## LINK CARRYING IDLER

For transporting bulk material, suitable for stringer conveyor with less noiss.

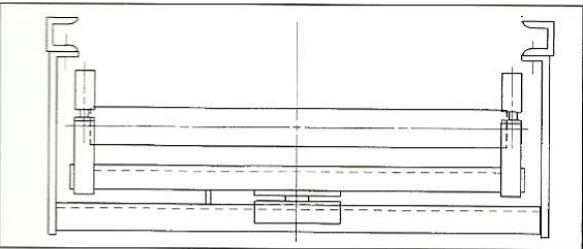
STRINGER CONVEYOR용으로 저소음의 적하물 운송에 사용.



## SELF ALIGNING CARRYING IDLER

For preventing the carrying belt form off-line, particularly needed for curved conveyors.

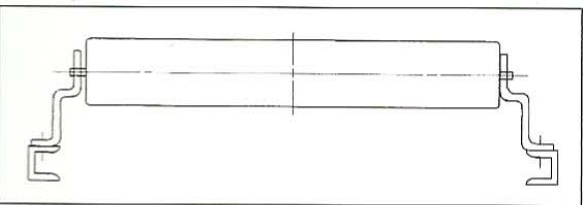
CARRYING측의 굴곡부 등에 BELT의 이탈을 방지하기 위해 사용.



## SELF ALIGNING RETURN IDLER

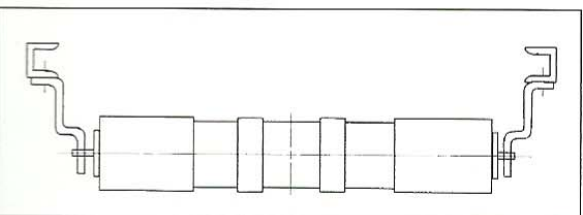
For preventing the return belt form off-line, particularly needed for curved conveyors.

RETURN측의 굴곡부 등에 BELT의 이탈을 방지하기 위해 사용.



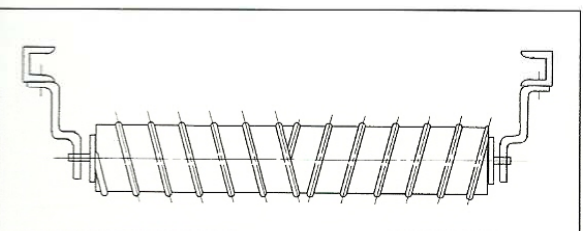
## RETURN IDLER

For supporting the return belt with less than 2,400mm in width. 2,400mm 이하의 RETURN 측 BELT 지지에 사용.



## RUBBER DISC RETURN IDLER

Return idlers with rubber ring used for sticky conveying materials. 점착성 운송재질에 사용되는 고무링이 부착된 RETURN IDLER



## SPIRAL RETURN IDLERS

Not only cleans itself, but wipes the belt clean and double-spiral configuration minimizes belt training problems such as misalignment.

이중 나선형 구조로 자체 및 BELT의 청결을 유지하고 BELT의 사행 등과 같은 운전중의 문제점을 최소화 함.